

Barnsbury Estate Transformation – BEST



Workshop 3

Barnsbury Now: Outside Space and Security

Tue 19th Nov
7pm – 8.30pm

• Thu 21st Nov
10am – 12pm

• Sat 30th Nov
10am – 12pm



Contents

1. Introduction and Residents Workshops
2. Summary of Workshop 2 Resident Feedback
3. What's Next
4. Tell Us About Where You Live
5. Break Out Discussions
6. Summary of Questions and Key Themes



Introduction

Introduction

Introduction

Introduction

Introduction

Barnsbury Estate Transformation - BEST

Resident-led, right from the start.



Resident Workshops



We Are Here



WORKSHOP 1

KICK OFF – INTRODUCTION & OUR COMMITMENTS
OCTOBER 2019

Session 1 – Tuesday 8 October 7pm-8.30pm
Session 2 – Thursday 10 October 10am-12pm
Session 3 – Saturday 12 October 10am-12pm



WORKSHOP 2

Your home or your business: future improvements

Session 1:
Thursday 31 October
10am – 12pm
Session 2:
Saturday 2 November
10am – 12pm
Session 3:
Thursday 7 November
10am – 12pm

WORKSHOP 3

Barnsbury now: outside space and security

Session 1:
Tuesday 19 November
7pm – 8.30pm
Session 2:
Thursday 21 November
10am – 12pm
Session 3:
Saturday 30 November
10am – 12pm

WORKSHOP 4

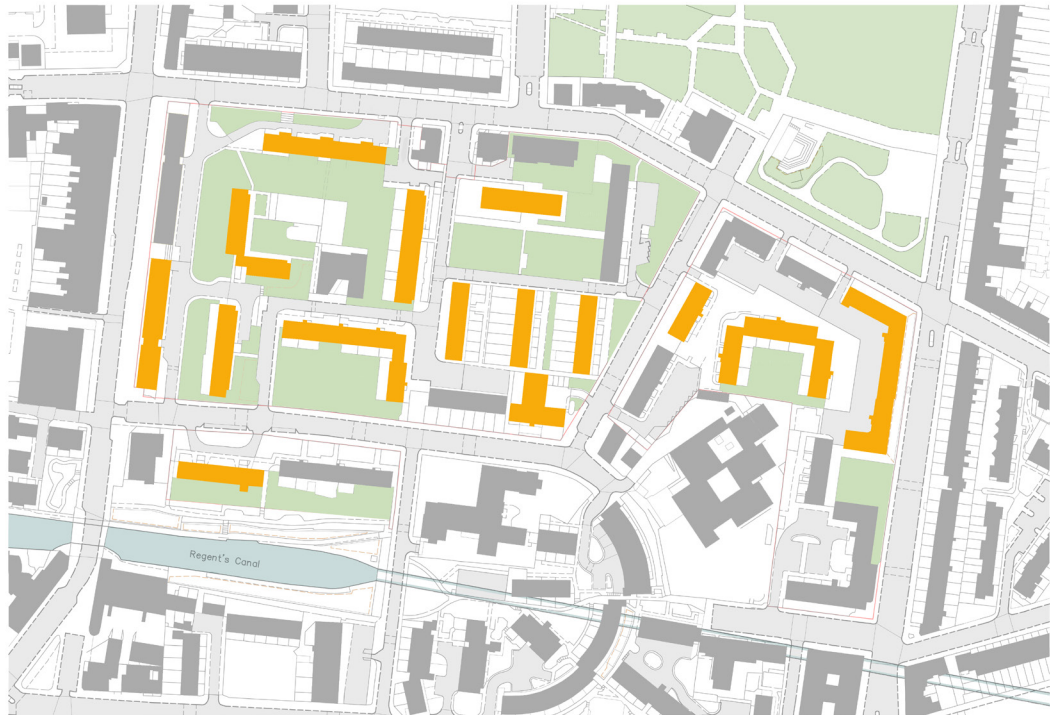
Taking stock

Session 1:
Thursday 12 December
10am – 12pm
Session 2:
Tuesday 17 December
7pm – 8.30pm

Summary of Workshop 2 Resident Feedback

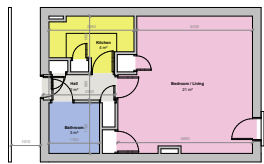
Home Visits: Learning with Residents

19 homes visited across Old and New Barnsbury



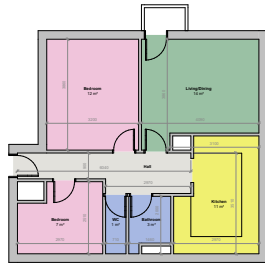
Measuring Your Homes

HOME VISIT:
Studio Flat



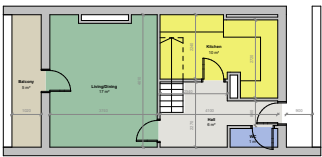
Ground Floor

HOME VISIT:
2 Bedroom Flat



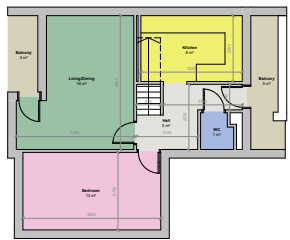
Ground Floor

HOME VISIT:
3 Bedroom Maisonette

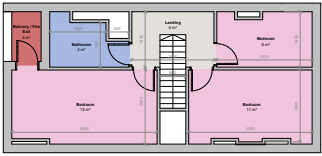


Ground Floor

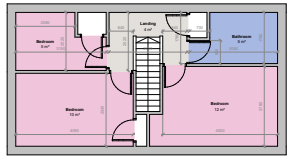
HOME VISIT:
4 Bedroom Maisonette



Ground Floor



First Floor



First Floor

Your Homes: Bedrooms

RESIDENT COMMENTS: HOME VISITS

- Bedrooms are too small; not enough space for furniture
- Some bedrooms are not very usable. Also
- Built-in storage makes room
- Overcrowded
- Unusable

Your Homes: Entrance and Circulation

RESIDENT COMMENTS: HOME VISITS

- Entrance to home not welcoming
- Front gardens for ground floor maisonettes are well used.
- Entrances and hallways are too narrow
- Unnecessary boxing of pipes and wires in hallways and landings
- Lack of storage for coats, shoes, prams, general household items
- The balcony door of some homes is raised high making access difficult.
- Communal access controls are broken on some blocks
- Communal deck access balcony railings missing

Your Homes: Kitchen, Dining and Living Space

RESIDENT COMMENTS: HOME VISITS

Living Area

- Living rooms are too small - size should reflect number of people
- Living rooms are a good shape - square
- Not enough space for a dining table - Can't eat as a family
- Better lighting needed
- Study space for children needed
- Studio homes offered more flexibility for living and dining furniture

Kitchen

- Impractical kitchen layouts
- Not enough counter top
- Kitchen is at the end of life - needs to be replaced/modernised
- Like location of sink under window
- Lack of storage
- Unusual boxing out - impacts kitchen layout
- Underside of stair case impacts usable space

Your Homes: Bathrooms

RESIDENT COMMENTS: HOME VISITS

- Bathrooms are too small
- Some separate WC have no sinks - basic hygiene concern
- Boxing behind bath prevents shower attachment being installed
- Unusual boxing impacting bathroom layout
- Lots of exposed pipework
- Balcony in front of bathroom - lack of privacy
- Lack of bathroom storage
- Fixtures and fittings are in a general state of disrepair

What We Asked You

WHAT CAN YOU TELL US ABOUT YOUR HOME?

Workshop 2 Your Home / Your Business

Entrance & Circulation

Is your entrance welcoming?
Is it easy to move around your home?



Kitchen

Does your kitchen work for you?
If not, why?



Living

Does your living space work for you?
Could anything be improved?



Dining

Where is your dining space located?
Could anything be improved?



Bedrooms

Do your bedrooms provide enough
space? Could anything be improved?



Bathroom & WC

Is your bathroom functional?
Is it easy to use?



Storage

Have you got enough storage?
(For bikes and prams etc?)



Daylight

Are your homes bright? Do you have
to turn on the lights in the daytime?



Build Quality

Are your homes well built?
Easy to look after?



Outside Space

Do you have enough private outside
space? Is it usable?



Home Security

Do you feel safe in your home?
If not, why not?



Home Comfort

Is it easy to make your home warm?
Or do you have large fuel bills?



Noise

Can you hear your neighbours or
noise from outside?

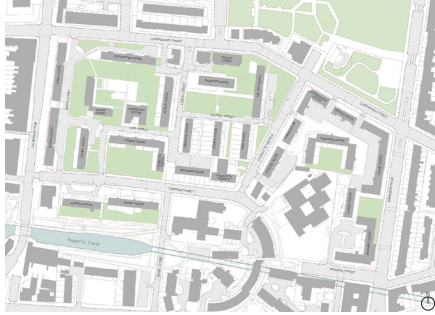


Fresh Air

Are your homes well ventilated?
Can you open windows easily?



Key Plan: Barnsbury Estate



What You Told Us About Your Homes

Resident Workshop Feedback

Kitchen

- Larger kitchens where you can cook and dine as families was the most common feedback about the kitchen.
- You also want better design and layout to solve practical issues:
- Space for appliances, more countertops, plug points.

Living

- Residents are happy with their living rooms, particularly the size and amount of daylight
- However some stated they are badly configured meaning that furniture cannot be easily arranged.



What You Told Us About Your Homes

Resident Workshop Feedback

Bedrooms

- Increasing the size of bedrooms was one of the most popular suggestions.
- Families with children would like a study space incorporated into the bedrooms.

Bathroom

- Separate WC's are desired by residents who do not currently have them. Those who do have a separate WC like them, but want a sink included.
- Combined bath and showers were the most popular piece of feedback in the bathroom.

Storage

- Increasing storage in all rooms was the most frequent piece of feedback across all of workshop 2.



What You Told Us About Your Homes

Discussions also covered the following topics:

- Those who are happy with their homes as they are
- Entrance and circulation
- Dining
- Build Quality
- Private outside space
- Home security
- Home comfort (heating and insulation)
- Noise
- Fresh air



What You Told Us About Your Businesses

Businesses including the much valued NISA local also attended giving their feedback.

- Some businesses are concerned about possible having to leave their premises
- Timescale for any works
- The businesses that attended said they want to stay in the same position and retain their business
- Crime on Caledonian road.

Feedback Newsletters:

- This feedback will be set out in more detail and posted to all of you after each workshop.



What's Next

1. Online Engagement

- www.givemyview.com/BEST
- Broaden participation
- Quick, easy and convenient

2. Young people on the estate

- Action Dog film project

3. Next workshop: Taking stock

Young People On The Estate: Youth Film Project

WHEN: Starting in
November 2019



For My More Information Contact: Tim Barklem • tim@actiondog.net • T: 07943 804 043

Tell Us About Where You Live

Barnsbury Walkabout: Map of Route

Barnsbury walkabout: map of route

No one knows the estate better than the residents living there.

The planned Walkabout route of the Barnsbury Estate and neighbouring area is mapped out below. The planned route is to be used as a guide, however this can be adapted if residents have a particular area they would like to visit.

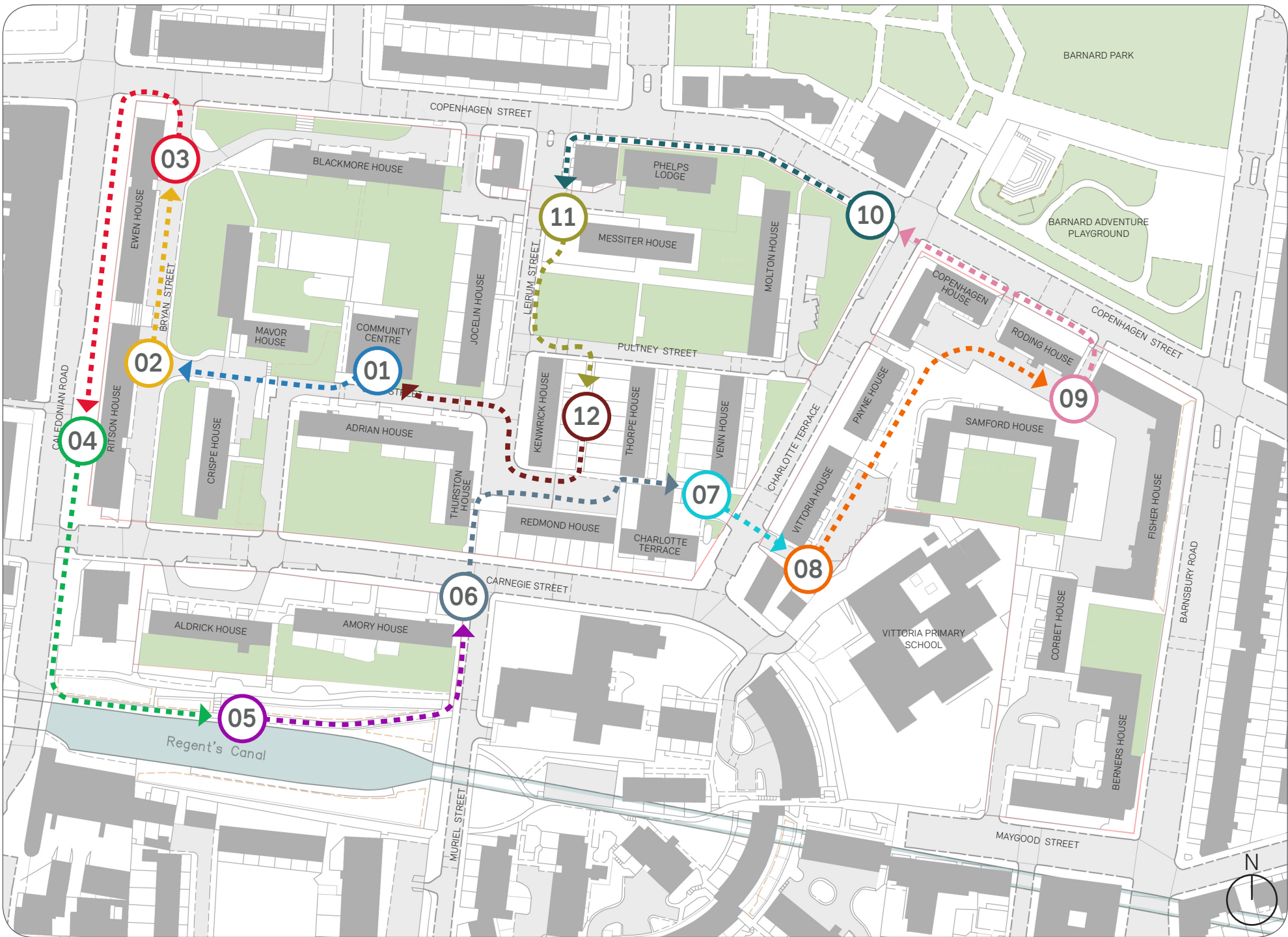
We really appreciate your time and your feedback will help us understand what is working well and what areas of the estate could be improved.

We are hear to listen and learn from all residents


Some questions to think about whilst you are walking around the estate:

- What do you really like about the estate?
- What could be improved?
- How do different spaces make you feel?
- Is it easy to move around the estate?
- How could the landscape be improved?
- What routes do you use to get to where you need. Do your routes change depending on the time of day - why?
- Do you feel safe?

- LOCATION 1**
Meeting point: the community centre and outside spaces
- LOCATION 2**
Bryan Street - the back of the shops
- LOCATION 3**
Green spaces by Ewan House and Blackmore House
- LOCATION 4**
Calendonian Road - outside shops
- LOCATION 5**
Along Regents Canal
- LOCATION 6**
At the Junction of Muriel Street and Carnegie Street
- LOCATION 7**
Access route between Charlotte Terrace and Venn House
- LOCATION 8**
Communal area in front of Vittoria House
- LOCATION 9**
Communal areas in front of Samford House and Roding House
- LOCATION 10**
Green spaces along Copenhagen Street
- LOCATION 11**
Car park and communal gardens along Leirum Street
- LOCATION 12**
Access route in front of Kenwick House



Barnsbury Walkabout: Question Booklet for Residents



Barnsbury Estate Transformation - **BEST**


Barnsbury walkabout


Tell us about where you live

Learning with residents

Mon 11th Nov 2.00-3.00pm

Wed 13th Nov 6.00-7.00pm






Do you have any other feedback or suggestions?

NAME: _____

HOME ADDRESS: _____

TELEPHONE: _____

EMAIL: _____



Please fill in your contact details below

NAME: _____

HOME ADDRESS: _____

TELEPHONE: _____

EMAIL: _____

Tell us about where you live

 **The outside spaces in between buildings are just as important as the homes you live in.**

Write your comments in the boxes on this page telling us your views about the Barnsbury Estate as it is now:

- What do you like about it?
- What could be improved?
- Aspirations for the estate?

Shops

Do you use the local shops?
Would an estate shop be useful?



Friendly

Is the estate a friendly place to live?
Is there a sense of community?



Facilities

Are there other facilities you would like to see on the estate?



Accessibility

Is it easy to move about the estate?
Is it easy to get to the school/shops?



Entrances to homes

What do you like about the journey to your block? What could be improved?



Landscape

Do you use the green spaces on the estate? What can be improved?



Parking

What do you think of the current parking situation?



Estate safety and security

Do you feel safe on the estate?
If not, why not?



Playspace

Do you/your family use the playground? What can be improved?



Materials

Do you think the building look nice?
What materials do you like?



Bins

How well are waste and recycling facilities working?





Landscape



Do you use the green spaces on the estate?



Playspace & Accessibility



Does your family use the playground? What could be improved?



Is it easy to move about the estate? Is it easy to get to the bus stop/school/shops?



Shops & Facilities



Do you use the local shops?
Would you like better access
to local shops?



Are there other facilities
you would like to see on
the estate?



Parking & Bins



Does the current parking solution work? What could be improved?



How well are waste and recycling facilities working?



Entrances to Homes & Security



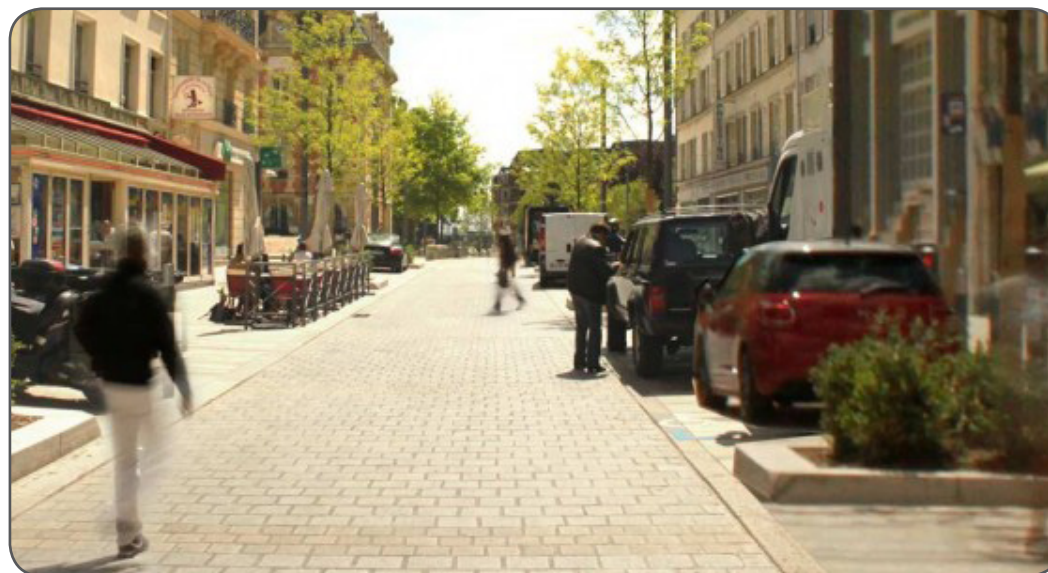
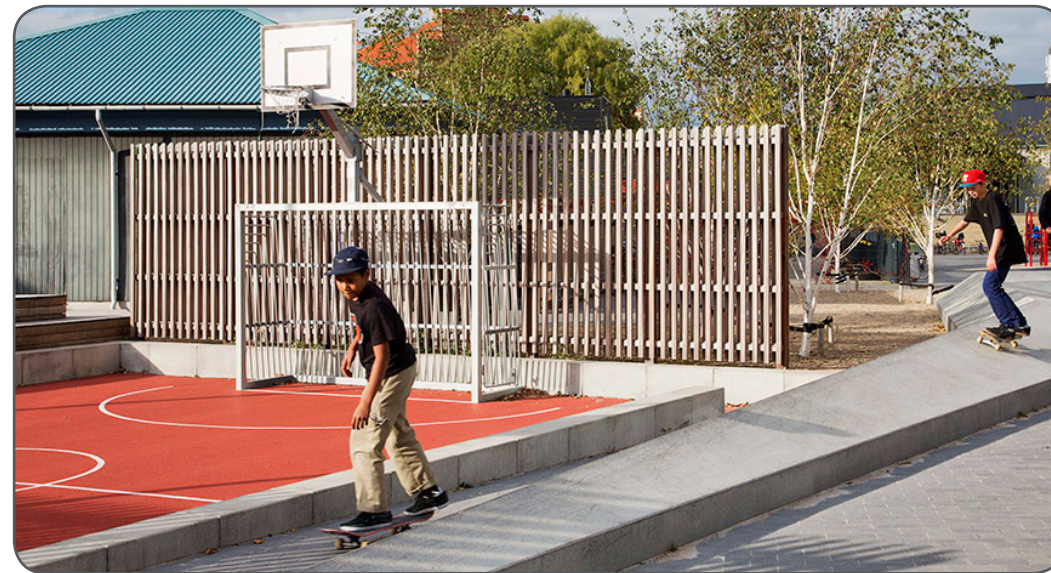
What do you like about the journey to your home?



Do you feel safe on the estate? What could be improved?



Landscape Opportunities



Break Out Discussions – Your Questions & Aspirations



Summary of Questions and Key Themes

