

health and wellbeing:

This leaflet outlines ideas from the BEST team about the future of the Barnsbury Estate's public and green places. In our engagement with you so far you have told us that:

- You value these places as an important part of the estate environment and residents' health and wellbeing
- You want to see them opened up with better landscape and improved security

This leaflet explains 6 principles for outdoor space together with some early ideas for how these might look. They follow the outline scheme shown in the February Workshop 6 and newsletter.

We want to know what you think!

Please draw or write down your thoughts in the boxes around the map on the back of this leaflet and send us a picture from your smartphone, or get in touch via the BEST team's contact details below to discuss your ideas.

the BEST team
best@newlon.org.uk



Newlon are always here to help

If you have any questions or need help and advice, please do not hesitate to get in touch.

BEST Team: best@newlon.org.uk
(Proposal Feedback + Enquiries) 020 7613 7596
020 8709 9172

Newlon Helpline: barnsbury@newlon.org.uk
020 7033 4605

Source Partnership: info@sourcepartnership.com
(Independent 0800 616 328 (freephone)
Residents' Advisor)



Community

A new community heart

We want to create a new, expanded community centre for the estate. This larger community hub will open onto a community square with new play spaces, adult exercise equipment, a sports court, and plenty of room for a picnic under the trees.



Security and Safety

Making a safer neighbourhood

You have told us how important safety and security are for you. We want to create secure residents only green courtyards, accessible only with a key. By eliminating dark corners that are not overlooked by homes it will be easier for you to see and hear what is going on outside.



Space for Play

More for young people

Play is the most important part of any childhood and you have asked us to improve play space across the estate. We will create play spaces that are fun for children of all ages, closer to nature and easier for adults to supervise.



Growing Food

Space to grow your own

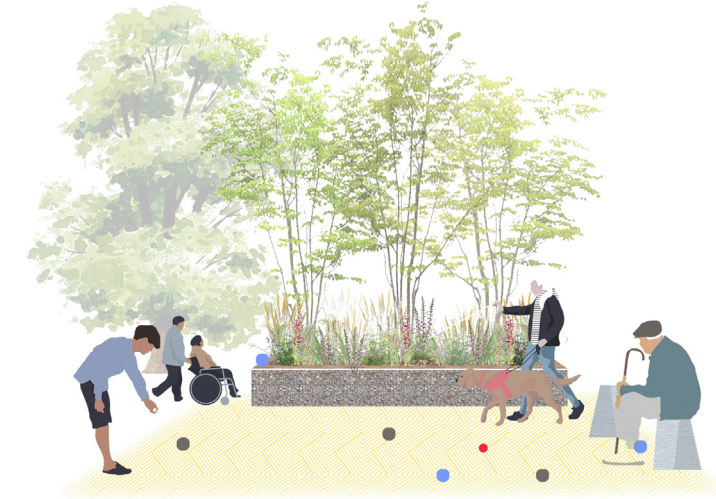
Existing allotment spaces are valued shared spaces which are in high demand. A transformed Barnsbury Estate would offer more spaces to grow vegetables and flowers, with fruit trees in private courtyards for residents to share.



Keeping Active

Activities for all ages

The landscape will provide plenty of opportunities for people of all ages to keep active and get together. We will create green spaces providing plenty of seating in the sun and the shade, peaceful routes for a short walk, and comfortable spaces to be social and keep healthy.



More Space for Nature

Greening the estate

Access to nature improves wellbeing. We will add to the number of trees on streets and in green spaces, as well as planting more shrubs and smaller plants throughout the estate. These greener spaces will not be fenced off, but kept open for people to use.



We want your ideas!

This is an impression of what a transformed Barnsbury Estate landscape could look like. Old Barnsbury buildings are shown in red and will be retained and refurbished as part of the proposals. The indicative building layout for New Barnsbury is shown in green.



Draw or list your ideas in the boxes provided on this map to let the BEST team know what you think.



Take a picture on your phone of your ideas and email it back to the team. Or contact the BEST team to discuss your ideas.

best@newlon.org.uk



We want the Barnsbury Estate to offer activities for everybody

Please tell us what you think
What sports do you enjoy? What leisure facilities would you like to see?



We want to provide more places for people to grow their own

Please tell us what you think
Would you like to grow your own? What kinds of fruit trees would you like to see planted?



We want the Barnsbury Estate to feel safe

Please tell us what you think
What do you think about the 7 secure resident only courtyard spaces? What else would make you feel safe?



We're proposing a new community square

Please tell us what you think
What kind of activities would you like to happen in the square? What other community facilities would you like to see?



We want lots more accessible green space

Please tell us what you think
What activities would you like to do in your new parks? Do you have a favourite park you like to visit? What do you like about it?



We want to make Barnsbury better for play

Please tell us what you think
What kinds of play equipment would you like to play on? What else should a playground contain?

