



What's included

Tenants will be eligible for internal refurbishments to their existing homes if the ballot is successful. These refurbishments will be agreed with individual tenants in advance of any refurbishment work taking place and completed to the highest quality finish.

- Reconfigured kitchens, where possible, to increase size.
- New kitchen units including the safe removal and re-installation of your appliances.
- Reconfigured bathroom layout to include a toilet.
- New bathroom - choice of fixtures and fittings.
- New flooring in kitchen and bathroom.
- Redecoration of walls for any room substantially refurbished.
- Improved and/or increased storage where possible.
- Improved smoke and fire detection.
- New heating and ventilation system if required
- Rewiring if required

Putting your stamp on your home

We want your home to feel like your own and so all tenants will be provided with a number of choices as part of the internal refurbishment.

Layout choices:

- **Option 1:** Enlarge the kitchen by removing the separate toilet room. The toilet will be moved into a reconfigured bathroom.
- **Option 2:** Keep the separate toilet room, and provide smarter storage solutions in the kitchen

Finishing choices:

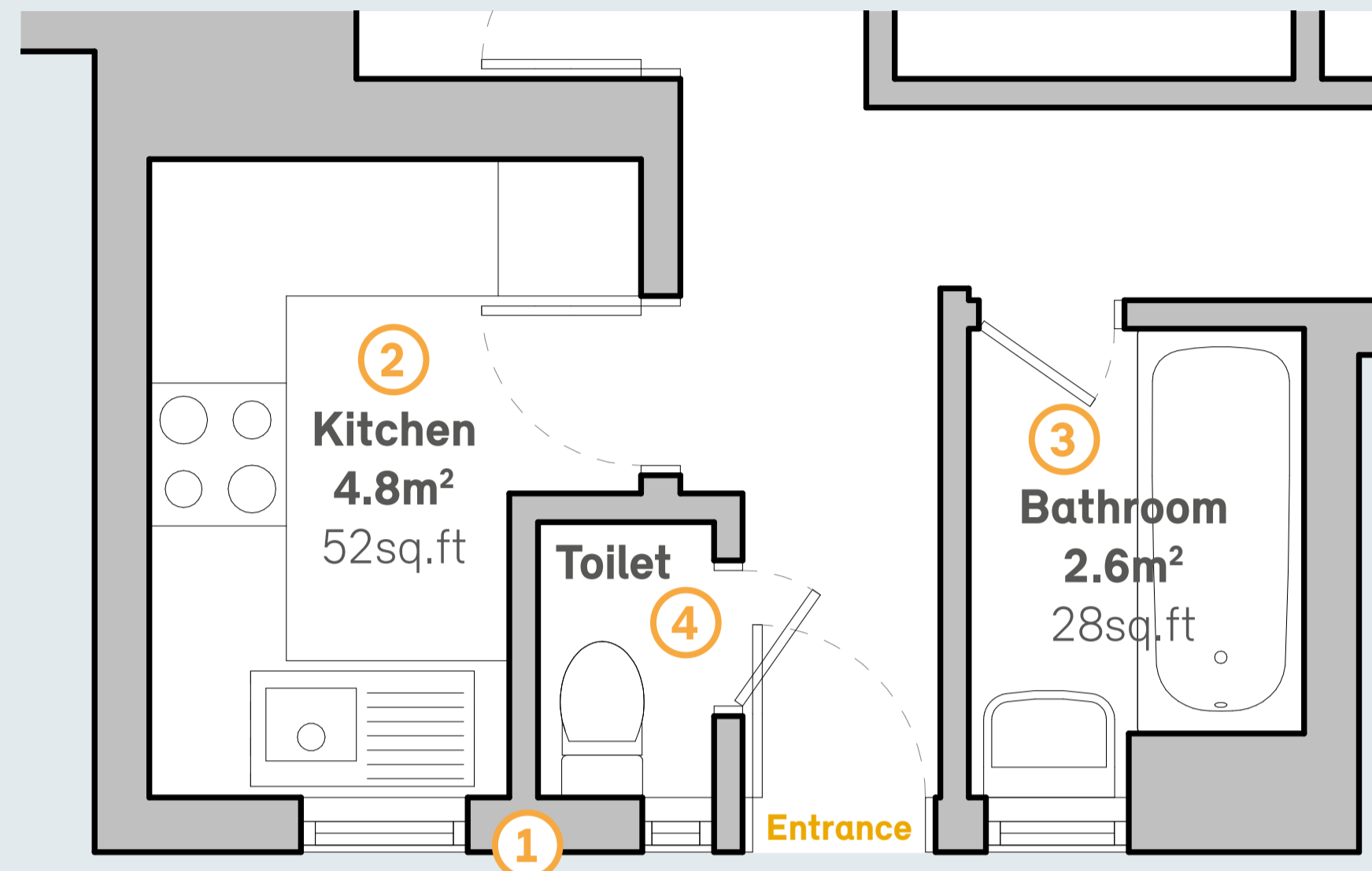
- **Kitchens:** Worktop and kitchen unit doors
- **Bathrooms:** Bath or shower, plus tiling
- **Paint finish:** Colour to redecorate walls
- **Flooring:** Flooring in kitchen and bathroom

A range of possible choices will be presented by Newlon for each of the items listed above following a positive resident ballot.

SHOW HOME BEFORE REFURBISHMENT

Show home: 29 Berners House, 4 bed home

Plan showing existing kitchen, bathroom and separate toilet layout



Show home information



How to book a viewing

We will inform you once the show home is ready and you will be able to book a viewing through the BEST team.

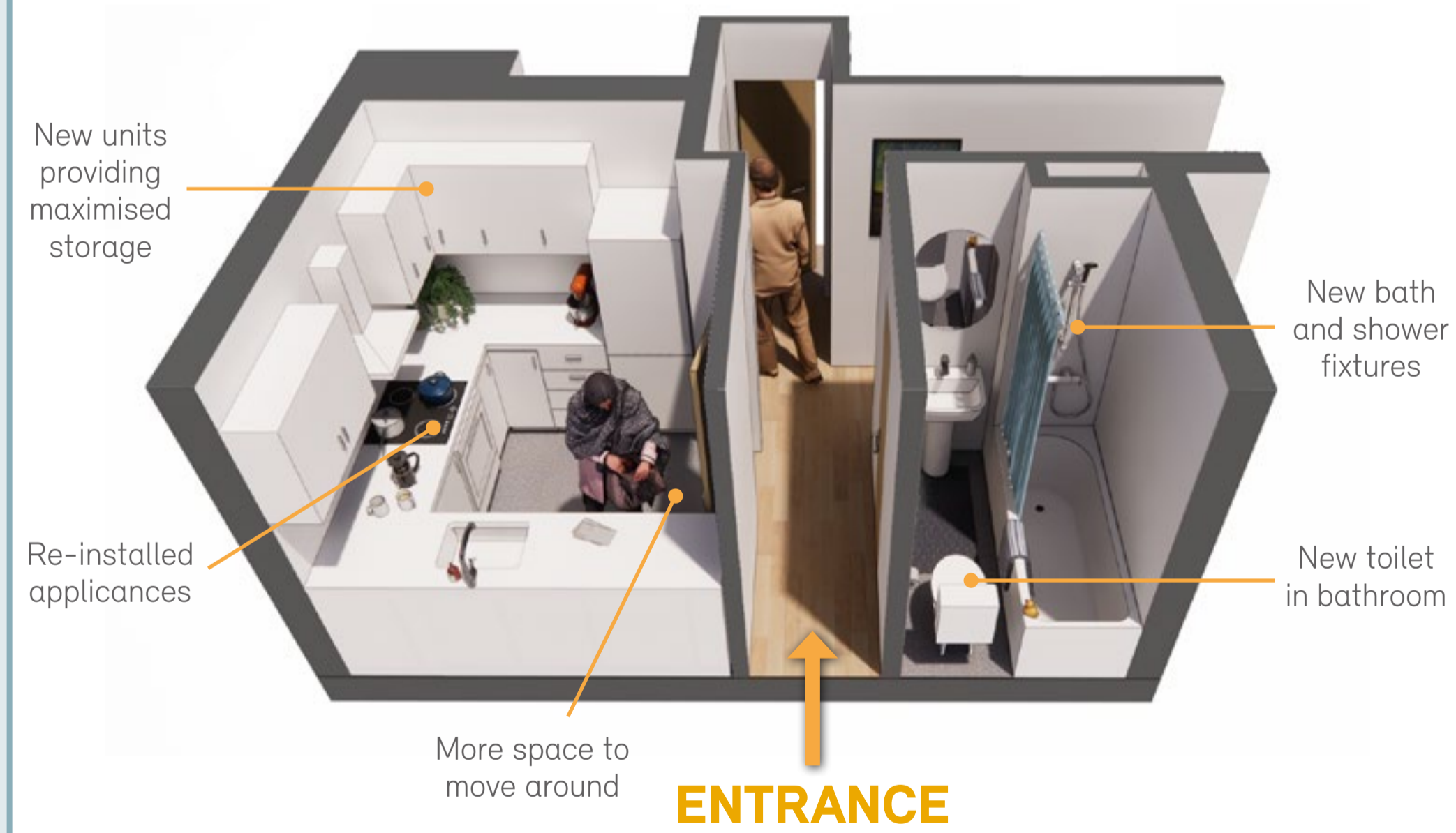
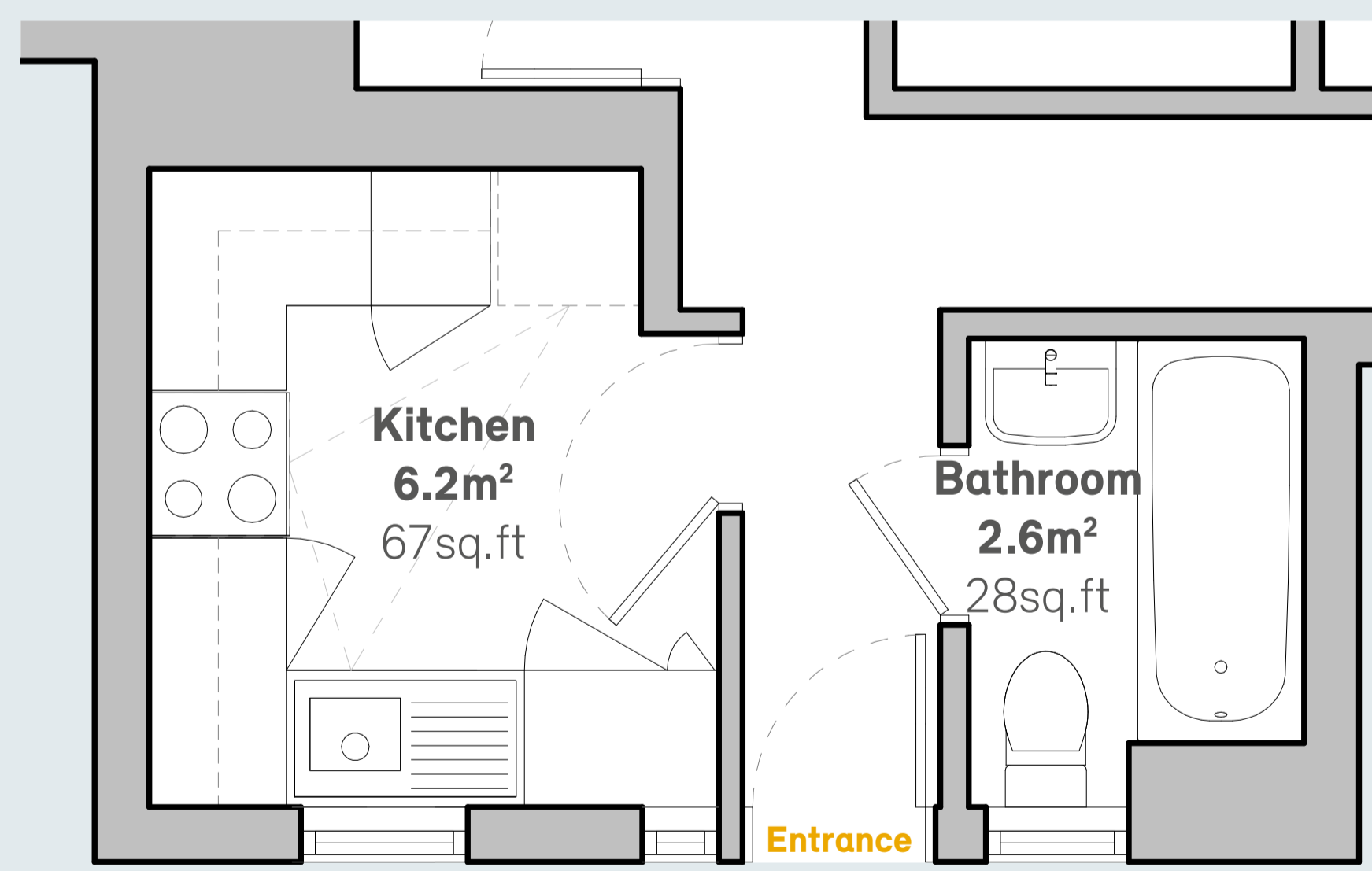
This will be after Workshop 8.

SHOW HOME AFTER REFURBISHMENT

What a refurbishment of your home could look like

Example layout of a refurbished home

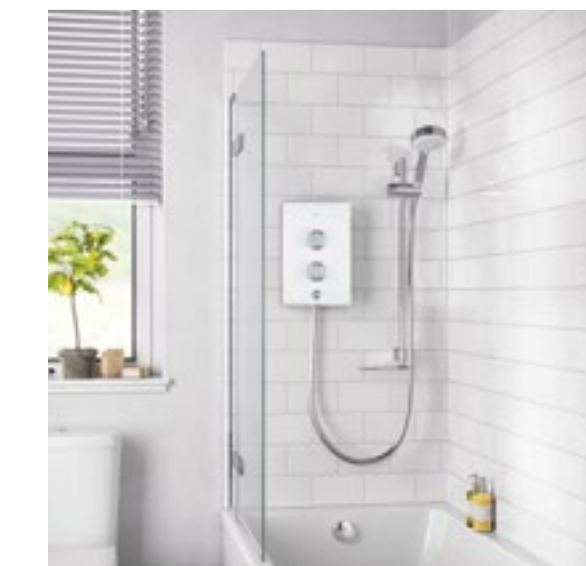
Show Home kitchen 29% larger than before



Kitchen



Bathroom



New windows

