



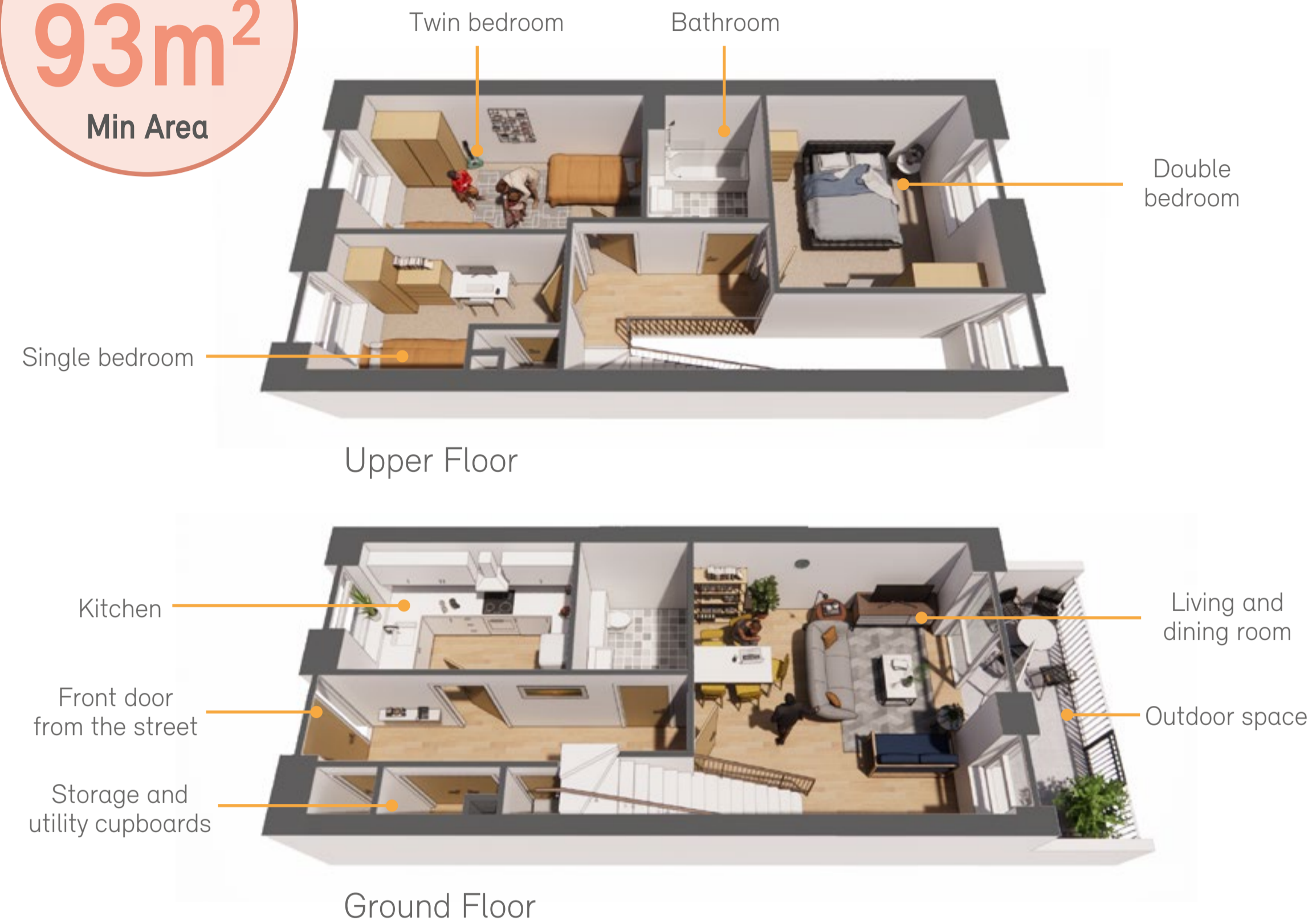
Three-Bedroom 5 Person Flat

3 Bed
5 Person
86m²
Min Area

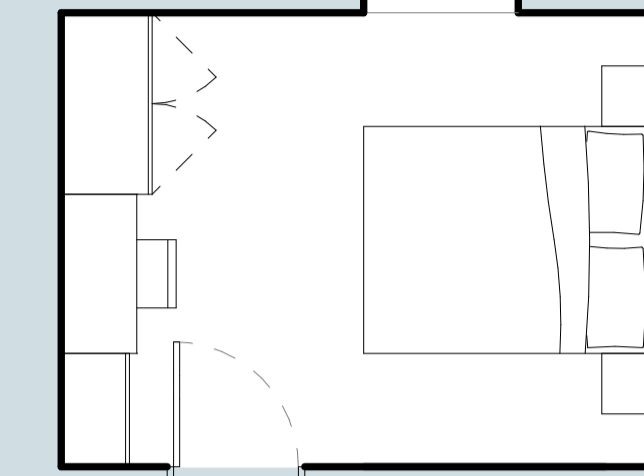


Three-Bedroom 5 Person Maisonette/Duplex

3 Bed
5 Person
93m²
Min Area



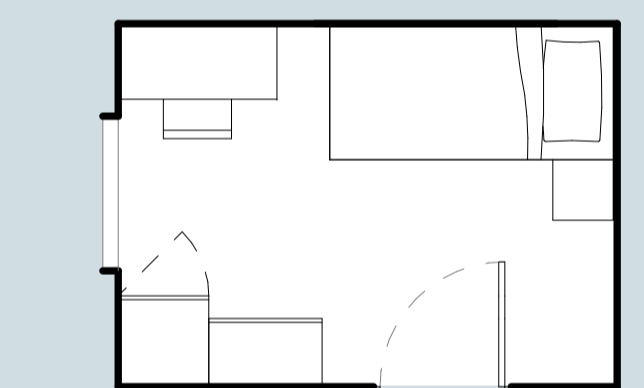
Modern space standards for every home: required minimum areas



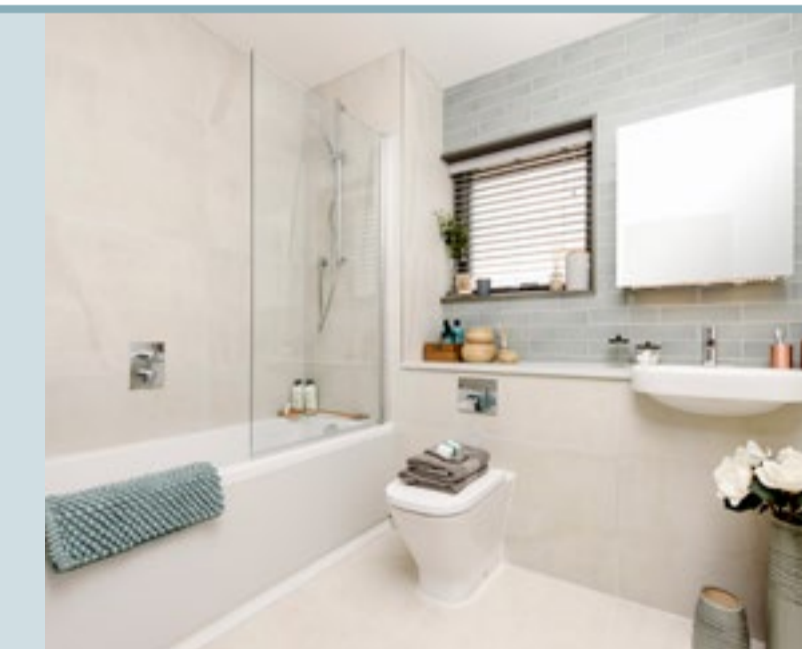
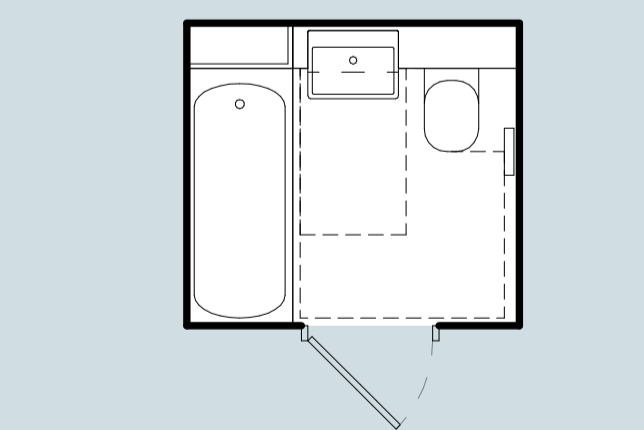
Double bedroom: 11.5m²/124sq.ft required minimum area



Twin bedroom: 11.5m²/124sq.ft required minimum area



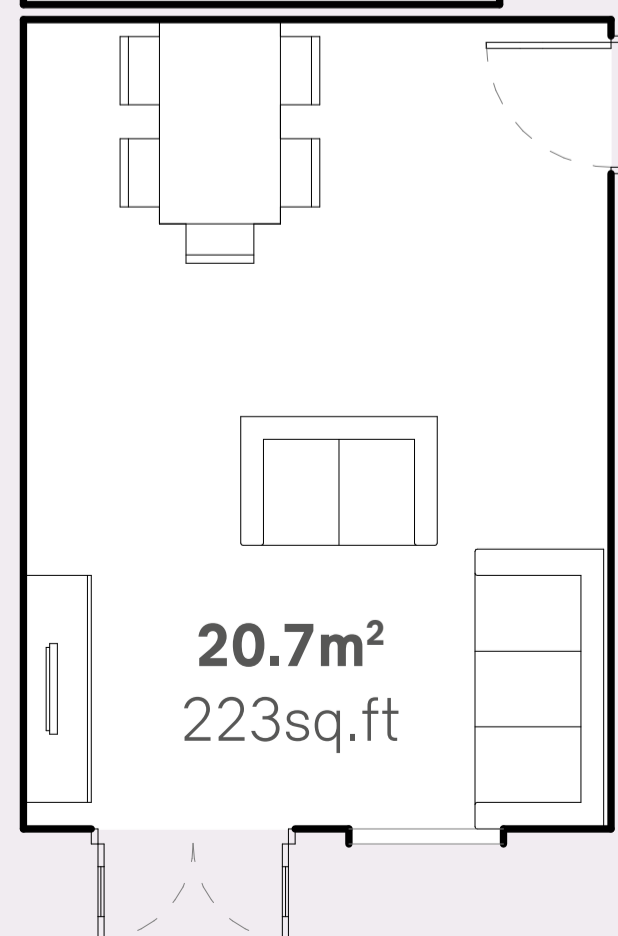
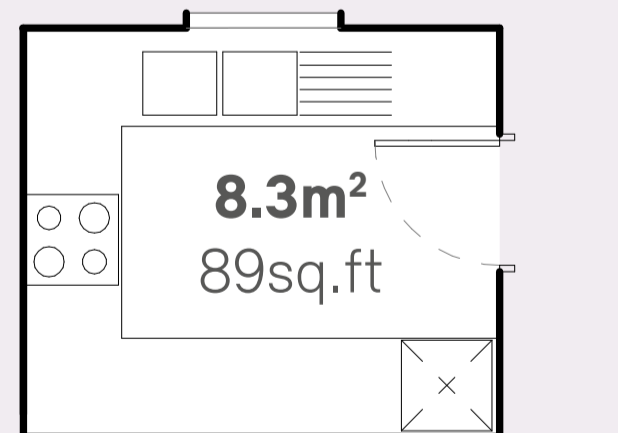
Single bedroom: 7.5m²/81sq.ft required minimum area



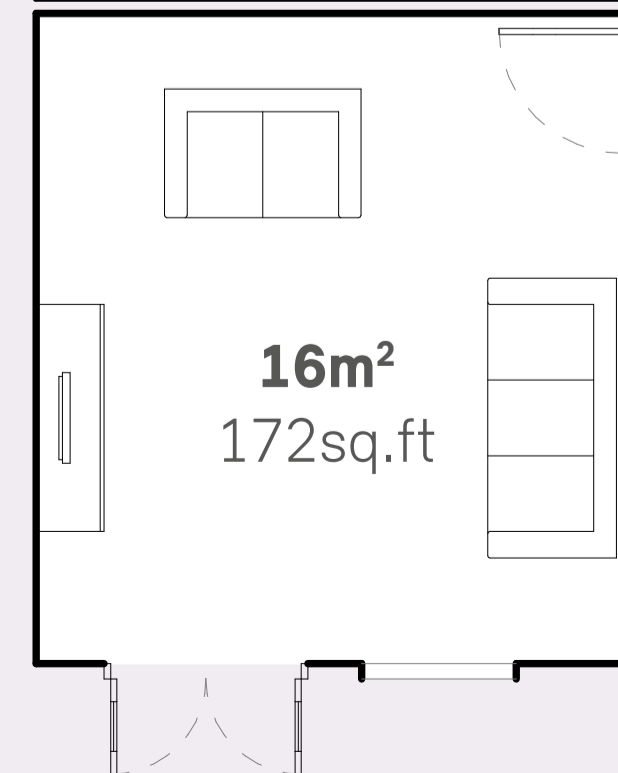
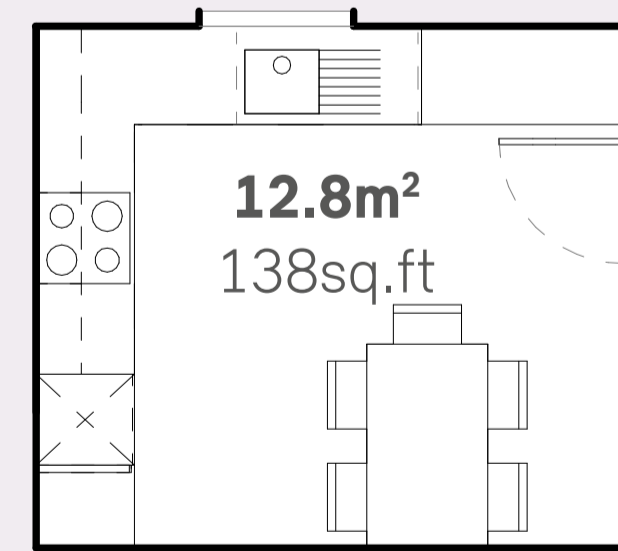
Family bathroom: 4.4m²/47sq.ft required minimum area

Recommended minimum space standards for every 3 Bed 5 Person home

Example combined living + dining, separate kitchen layout



Example separate living, combined kitchen + dining layout



Combined living, kitchen & dining total area
29m²
RECOMMENDED MINIMUM AREA



2.5m²
Built in storage



8m²
Outside space
Balcony, garden or terrace

Wheelchair homes



A number of 1, 2 and 3 bed wheelchair homes will be available across New Barnsbury to meet the housing needs of you the residents.