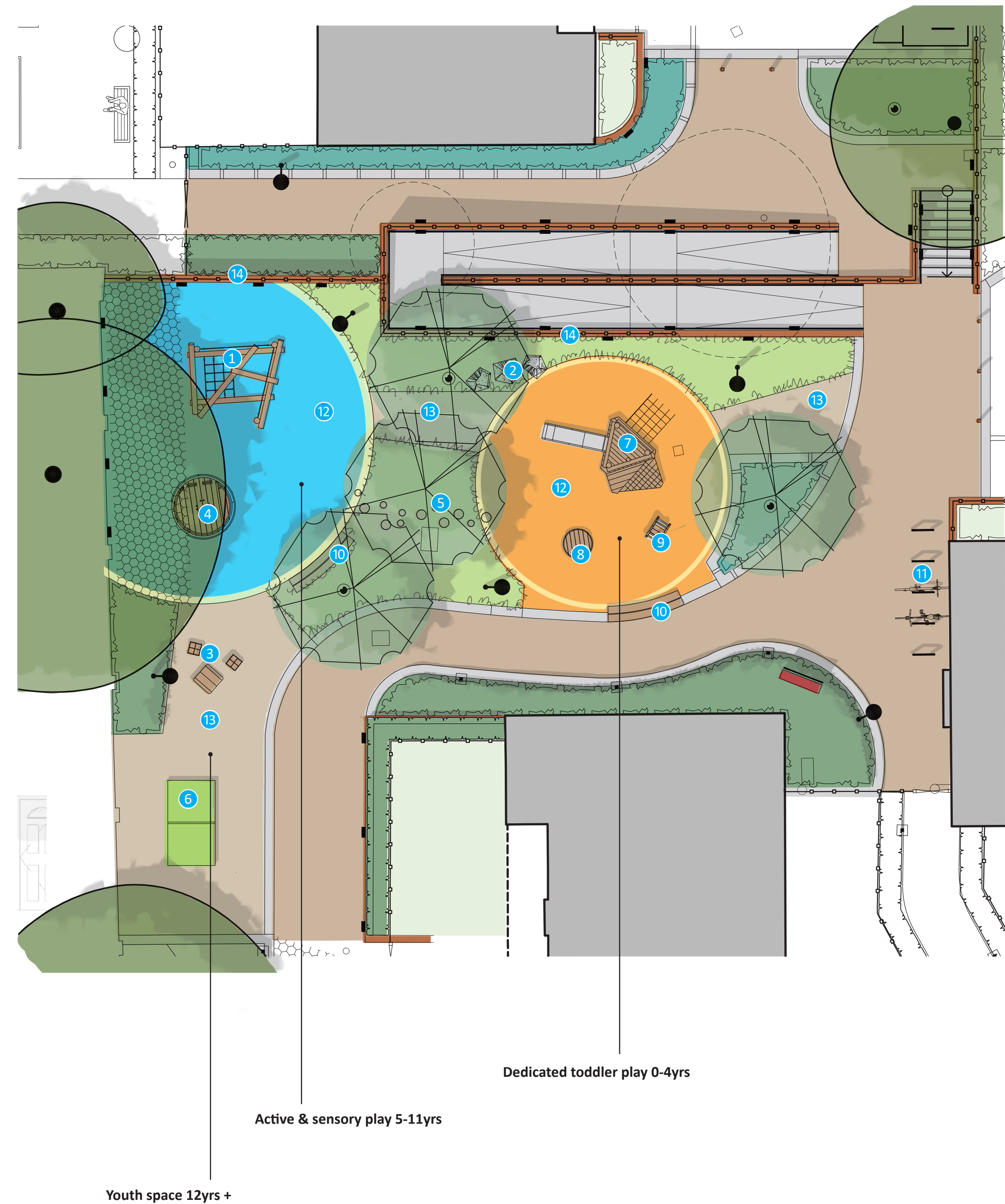


# 02 Plan: Play Area Elements



## Play Elements



1 Climbing Log/Net Unit



2 Play Boulders



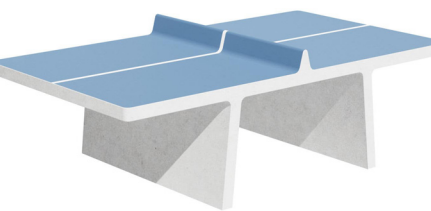
3 Group Cube Seating/Informal Play



4 Accessible Roundabout



5 Stepping Logs



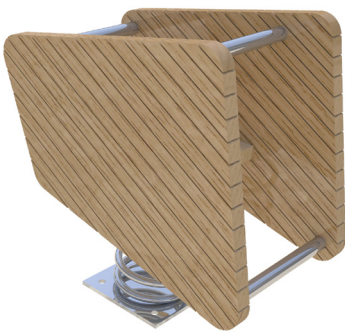
6 Table Tennis



7 Toddler Multi-Play Unit



8 Jumping Disc



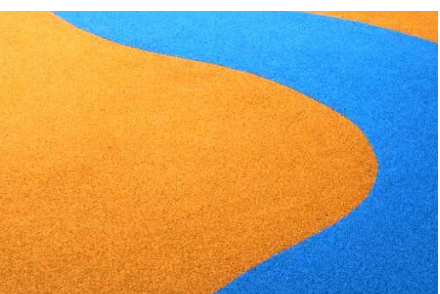
9 Accessible Rocker



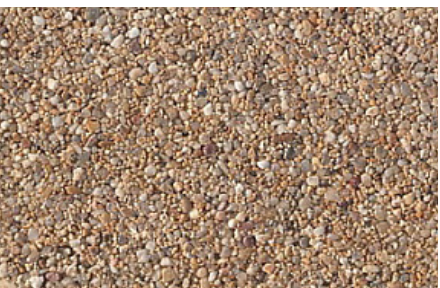
10 Benches (X2)



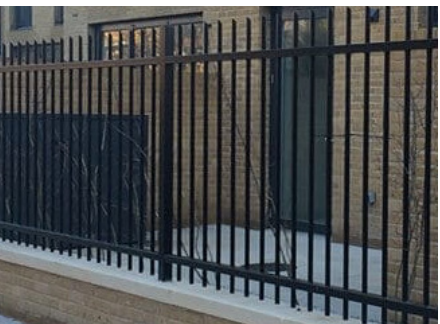
11 Cycle Stands (X5)



12 Coloured Safety Surfacing



13 Resin Bound Gravel



14 New Railings (Uniform Colour TBC)



### Dynamic Lighting

- Achieved through:
- Tree uplighting
  - In-ground strip lighting
  - Up/down lights to existing brick walls
  - Tree canopy uplighters



### Flowering Trees



### Sensory Planting



### Rain Garden

## Brief Play Statement

The focus of the play space within the scheme is to provide activities for a range of age groups from toddlers up to youths, and set within an attractive landscape setting that enhances the wider internal appearance of Old Barnsbury. This will promote greater social value, a more active lifestyle and, positive mental health for all.

The play elements themselves (shown to the right) will be a combination of dedicated play equipment and non-prescribed informal and multi-purpose play, incorporating an element of risk taking, physical challenges, and imaginary play which support young children's physical, social, and cognitive development.

Surface materials will include: brightly coloured rubber crumb safety surfacing that complies with any critical fall height requirements, and resin bound gravel to provide a soft and contrasting material to the brick paving used for the main pedestrian walkways through Old Barnsbury.

Benches and cube seating are provided around the play area so that play activities are managed by the close proximity of on-looking parents/guardians. Cycle stands are provided in accordance with the site's wider sustainable travel strategy.